

Elysium Properties™

Residential - Commercial - Hotels

699, Avinashi Road, Coimbatore-641 037, India.

Tel: +91 422 - 656 2222 / 3333 / 4444

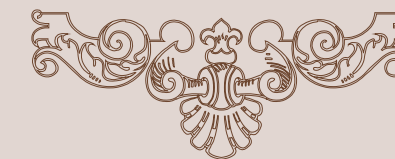
+91 96777 65622 / 96777 65644

www.elysium.in / sales@elysium.in

ELYSIUM



VILLA
PRIMERO



LIFE. LESS ORDINARY

Villa Primero, conceived and crafted by Elysium Properties consists of elegant villas and premium apartments that boasts Elysium's legacy of creating unparalleled living spaces. The stunningly fresh and inspiringly different Villa Primero is inspired by the Spanish colonial architecture and has the aura of sophistication. The entire development is an intriguing amalgamation of classical tradition and modern exuberance.



ARCHITECTURE. A MAJESTIC GRANDEUR

This gracefully designed Villa Primero is an ode to perfection and there is a fine blend of spiritual and cheerful characteristics ingrained in it. The dynamic attributes of the space blend seamlessly and subtly with the overall design of the villa. Each villa is the manifestation of true spirit of space that transcends conventionality, and exudes charm and elegance. It is not just a building, but poetic architecture.



EAST VILLA - 3250 ft² / 302 m²



GROUND FLOOR



Foyer
Living
Bedroom
Kitchen
Dining
Pooja
Store
Utility

FIRST FLOOR



Family Lounge
3 Bedroom
Dressing
Balcony
Open Terrace





NORTH VILLA - 3010 ft² / 280 m²



GROUND FLOOR



- Foyer
- Living
- Bedroom
- Kitchen
- Dining
- Pooja
- Store
- Utility

FIRST FLOOR



- Family Lounge
- 2 Bedroom
- Study Room
- Dressing
- Balcony
- Open Terrace

SOUTH VILLA - 2450 ft² / 228 m²



GROUND FLOOR



- Foyer
- Living
- Bedroom
- Kitchen
- Dining
- Pooja
- Utility

FIRST FLOOR



- Family Lounge
- 2 Bedroom
- Balcony
- Open Terrace



CHANGE.
THE BEST WAY
TO STAY TRUE TO YOURSELF

Villa Primero is meant to bring in a change to the way you live. It is a retreat from the chaotic outside world. It stands by itself as an indisputable masterpiece. Our approach has been to build on the aspect of achieving a superlative level of comfort and privacy. It appreciates an uncommon dedication to the pursuit of impeccable quality with a symphony of pure luxury.



PARADISO

Paradiso is a part of Villa Primero, housing 56 premium apartments ranging from 1205 sq.ft to 1745 sq.ft. Each apartment is meticulously planned and designed to perfection.



MASTER PLAN





RESIDENCE FLAT - A
1545 ft² / 144 m²

- Foyer
- Living
- Dining
- 3 Bedroom
- 3 Bathroom
- Kitchen
- Balcony
- Utility



RESIDENCE FLAT - B
1675 ft² / 156 m²

- Foyer
- Living
- Dining
- 3 Bedroom
- 3 Bathroom
- Kitchen
- Balcony
- Utility



RESIDENCE FLAT - C
1210 ft² / 112 m²

- Foyer
- Living
- Dining
- 2 Bedroom
- 2 Bathroom
- Kitchen
- Balcony
- Utility



RESIDENCE FLAT - D
1265 ft² / 118 m²

- Foyer
- Living
- Dining
- 2 Bedroom
- 2 Bathroom
- Kitchen
- Balcony
- Utility





RESIDENCE FLAT - E

1265 ft² / 118 m²

- Foyer
- Living
- Dining
- 2 Bedroom
- 2 Bathroom
- Kitchen
- Balcony
- Utility

RESIDENCE FLAT - F

1205 ft² / 112 m²

- Foyer
- Living
- Dining
- 2 Bedroom
- 2 Bathroom
- Kitchen
- Balcony
- Utility



RESIDENCE FLAT - G

1410 ft² / 131 m²

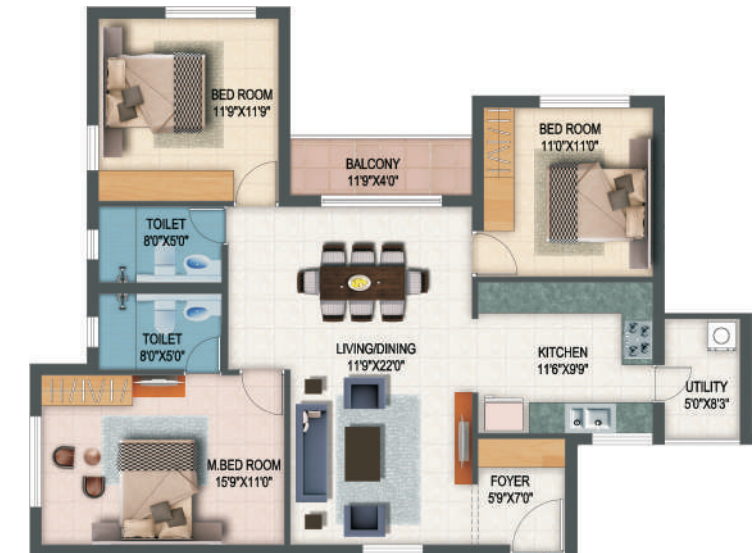
- Foyer
- Living
- Dining
- 2 Bedroom
- 2 Bathroom
- Kitchen
- Balcony
- Utility

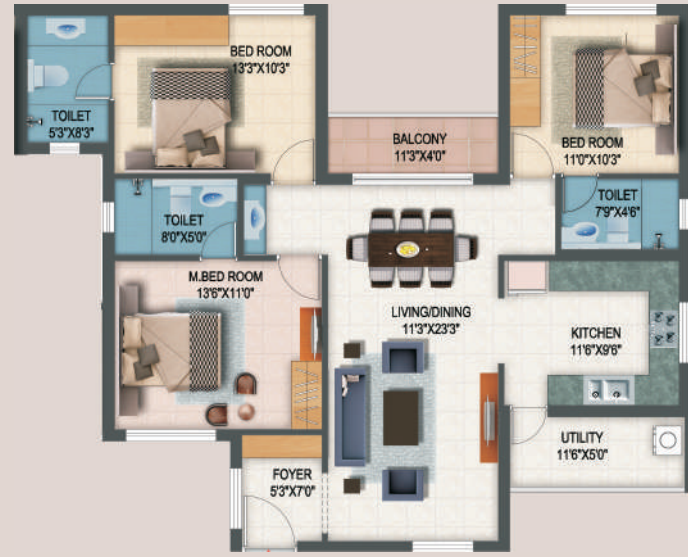


RESIDENCE FLAT - H

1520 ft² / 141 m²

- Foyer
- Living
- Dining
- 3 Bedroom
- 2 Bathroom
- Kitchen
- Balcony
- Utility





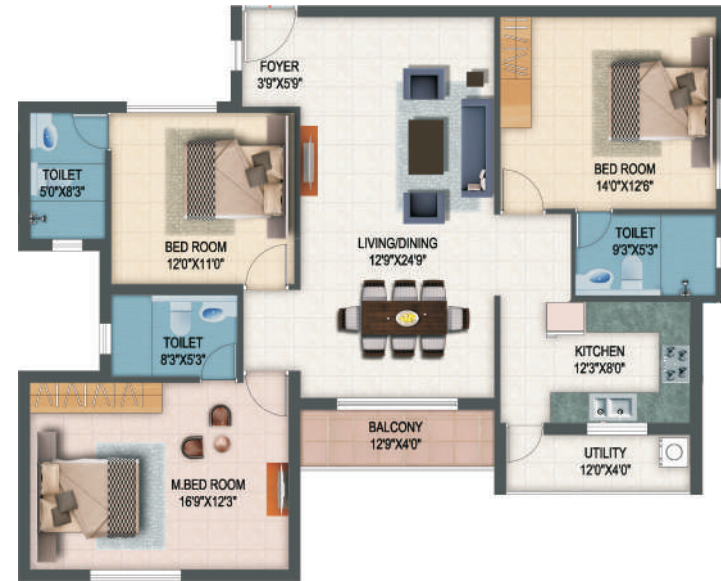
RESIDENCE FLAT - I
1535 ft² / 143 m²

- Foyer
- Living
- Dining
- 3 Bedroom
- 3 Bathroom
- Kitchen
- Balcony
- Utility



RESIDENCE FLAT - J
1745 ft² / 162 m²

- Foyer
- Living
- Dining
- 3 Bedroom
- 3 Bathroom
- Kitchen
- Balcony
- Utility



RESIDENCE FLAT - K
1210 ft² / 112 m²

- Foyer
- Living
- Dining
- 2 Bedroom
- 2 Bathroom
- Kitchen
- Balcony
- Utility



RESIDENCE FLAT - L
1255 ft² / 117 m²

- Foyer
- Living
- Dining
- 2 Bedroom
- 2 Bathroom
- Kitchen
- Balcony
- Utility





RESIDENCE FLAT - M

1520 ft² / 141 m²

- Foyer
- Living
- Dining
- 3 Bedroom
- 2 Bathroom
- Kitchen
- Balcony
- Utility

RESIDENCE FLAT - N

1680 ft² / 156 m²

- Foyer
- Living
- Dining
- 3 Bedroom
- 3 Bathroom
- Kitchen
- Balcony
- Utility



A WORLD SHAPED TO FIT EVERY LIFESTYLE.

Villa Primero, an abode of inspiration is a unique neighbourhood designed to lift your spirits. With plethora of impeccable luxuries to indulge in, it ensures there's always something for everyone

CLUB FEATURES

- Spa, Saloon & Health club
- Gymnasium
- Jogging track
- Swimming pool
- Children's play area
- Tennis court
- Basketball court
- Billiards
- Central park
- Alfresco party lawn
- Convenience store
- Multi layer security

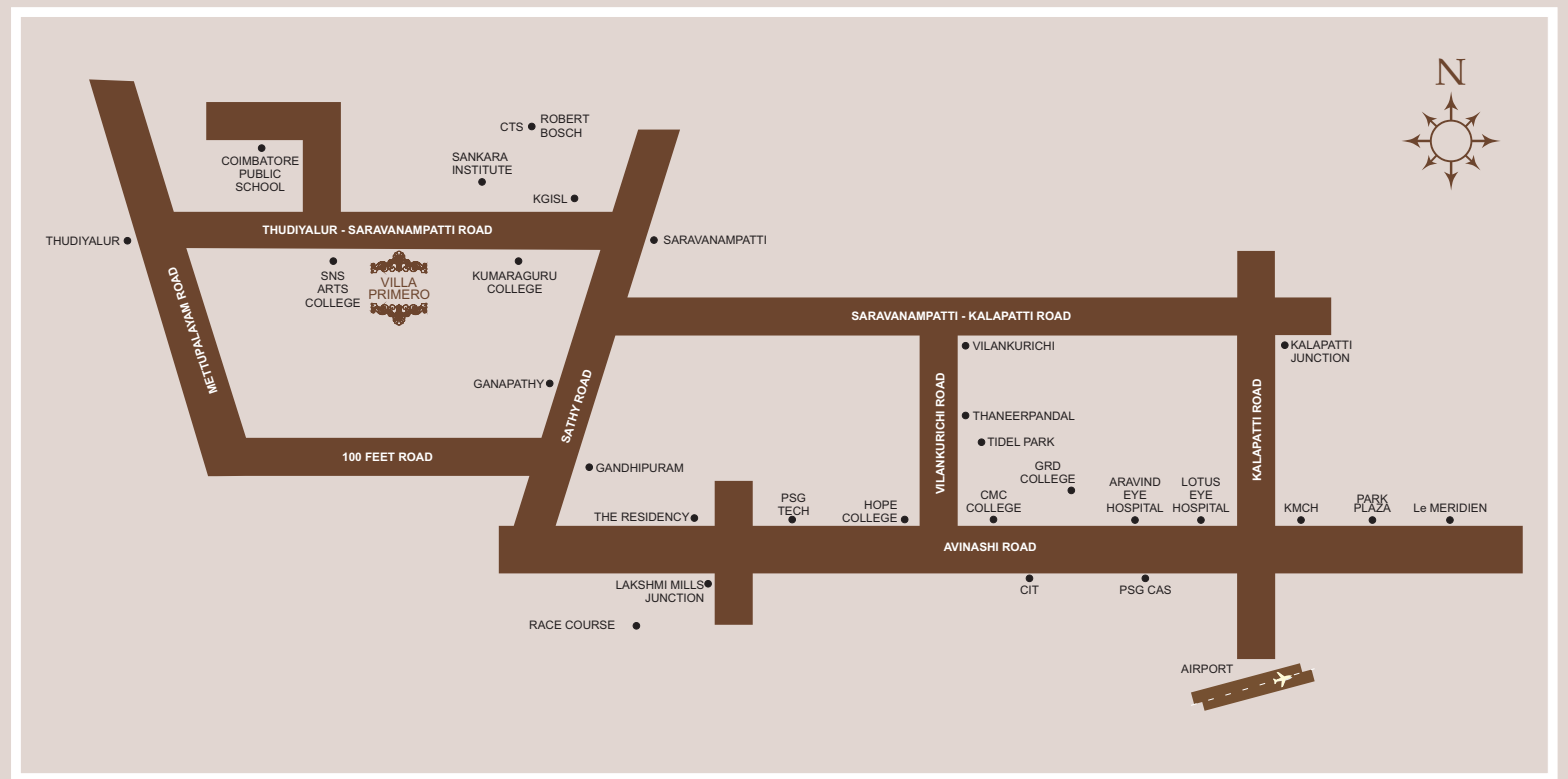




- EAST
- SOUTH
- NORTH
- APARTMENTS

LOCATION. ENVIABLE

Villa Primero is nestled amidst sprawling 4.2 acres of lush green nature. It is situated at Saravanampatti, off Sathy road in Coimbatore, which is known for its salubrious climate. The idyllic ambience of Villa Primero enables you to celebrate life and cherish every moment.



Technical Highlights - VILLA PRIMERO

Structure

Ground plus 1 storied RCC framed structure with block masonry walls.
Anti-termite treatment.
Car park provided in front/adjacent to the villa.

Foyer / Living

Superior quality vitrified tile flooring and skirting.
Emulsion paint for walls and ceiling.

Dinning / Bedrooms / Corridor

Superior quality vitrified tile flooring and skirting except master bedroom.
Superior quality laminated wooden flooring in the master bedroom.
Emulsion paint for walls and ceiling.

Toilets

Superior quality anti-skid tile flooring.
Superior quality glazed ceramic tiling up to ceiling.
Emulsion paint for walls and ceiling.
All sanitary fittings will be Roca / American Standard or equivalent.
Provision for exhaust fan in all toilets.
Granite vanity counter in master bedroom toilet.

Kitchen

Superior quality vitrified tile flooring and skirting.
Superior quality glazed tiling up to ceiling.
Emulsion paint for walls and ceiling.
Granite kitchen platform with stainless steel sink with drain board.

Plumbing

Concealed PVC piping.
Overhead tank and underground sump for each villa.
Automatic water level controller for overhead tank.
Separate tank provision for corporation water in the underground sump and overhead tank.
Sewage treatment plant for the community.

Electrical

Weather resistant concealed wiring.
Complete MCB & ELCB protection for each villa.
Adequate lighting and plug points.
Television and telephone points provided in living and master bedrooms.
Provision for AC points in all the bedrooms.
All electrical fittings to be of havells or equivalent brand.
All electrical switches to be Crabtree or equivalent make.
Three phase EB Connection.

Staircase (internal)

Cultured granite/marble treads & risers.
MS railing with wooden handrail.

Doors and Windows

Teak wood framed panelled shutter in main entrance door polished with matt finish.
Moulded doors with densified hard-wood frames in bedrooms.
Flush doors with waterproof laminated doors for Bathrooms.
Wooden frames with glass shutters for all the windows.

Landscape

Designer landscaping all around the villa and the community.
Rain water harvesting for individual villa.

OTHER FEATURES

Black tar top roads with street lights.
Underground electricity cables.
Comprehensive piping network for borewell & drinking water.
Water softening plant.
Power backup.
More than 70% lush green open space.
Multi layer security.
Other lifestyle essentials.

Technical Highlights - PARADISO

Structure

Stilt plus 4 storied RCC framed structure with block masonry walls.
Anti-termite treatment.
Car park provided in stilt floor.

Foyer / Living

Superior quality vitrified tile flooring and skirting.
Emulsion paint for walls and ceiling.

Dinning / Bedrooms / Corridor

Superior quality vitrified tile flooring and skirting.
Emulsion paint for walls and ceiling.

Toilets

Superior quality anti-skid tile flooring.
Superior quality glazed ceramic tiling.
Emulsion paint for walls and ceiling.
All sanitary fittings will be Roca / American Standard or equivalent.
Provision for exhaust fan in all toilets.
Granite vanity counter in master bedroom toilet.

Kitchen

Superior quality vitrified tile flooring and skirting.
Superior quality glazed tiling.
Emulsion paint for walls and ceiling.
Granite kitchen platform with stainless steel sink with drain board.

Plumbing

Concealed PVC piping.
Common overhead tank and underground sump.
Separate tank provision for corporation water in the underground sump and overhead tank.
Sewage treatment plant for the community.

Electrical

Weather resistant concealed wiring.
Complete MCB & ELCB protection for each flat.
Adequate lighting and plug points.
Television and telephone points provided in living and master bedrooms.
All electrical fittings to be of havells or equivalent brand.
All electrical switches to be Crabtree or equivalent make.
Three phase EB Connection.

Common Areas

Lobby area finished with granite.
Four 6 passenger lifts.
MS / SS handrail for the staircase.
All other common area finished with Superior tile flooring and skirting.

Doors and Windows

Hard wood framed panelled shutter in main entrance door polished with matt finish.
Skin doors with densified hard-wood frames in bedrooms.
Flush doors with waterproof laminated doors for Bathrooms.
UPVC frames with glass shutters for all the windows.

Landscape

Designer landscaping all around the community.
Common Rain water harvesting.